

let's COLOUR



FREE | 2021

SHOW YOUR HOME SOME LOVE WITH DULUX.CO.UK

THE
REFRESH
EDITION

MORE ROOM FOR LIVING

Find balance at home with double-duty decorating and the latest stylish shades

Unique and yours

Easy furniture makeovers
with a designer look

A world of colour

Discover how-to videos and
more expert advice @duluxuk



Scan for even
more inspiration
on dulux.co.uk



Let's hit refresh

Home: it's always been special, but in the past year it's also been the office, restaurant, pub, spa, hotel, social hub and sanctuary. So, what better way to say thanks than showing it a bit of love with a fresh new look? We've got everything you need to get started.

INSIDE THE ISSUE:

- 04 Our **Colour Lookbook** reveals how to create a calming sanctuary
- 08 Make the most of a small kitchen in **Spotlight On**
- 10 Get to grips with a statement wall in the **Weekend Project**
- 12 Hear how two readers transformed their homes in **My Colour Story**
- 18 Take on one of our quick **Micro Makeovers** projects
- 27 Get answers to your decorating dilemmas – just **Ask Dr Dulux**
- 37 Find out what questions to ask when you **Call the Pros**
- 38 See which paint to go for at a glance with **Paint Picker**
- 40 Discover everything you need for the **Ultimate Toolkit**
- 42 Show us your rooms! Join the **#feelgoodcolour** conversation



OUR EXPERTS



Meet **Marianne Shillingford**, our **Creative Director** and **colour guru** who'll help you pick the perfect palette.



Keep an eye out for **Matt Gray**, our **Skills Development Consultant** and our resident go-to guy for all things **DIY**.

PRODUCT KEY

We let you know which paint we've used throughout the magazine with swatches and tins (below) – making it super-easy for you to shop everything you see in store.

ON THE COVER



NEW Dulux Simply Refresh One Coat;
NEW Dulux Simply Refresh Feature Wall;
Dulux Quick Dry Satinwood

INTRODUCING SIMPLY REFRESH

One coat is all you need! Save time and energy redecorating your walls with new Dulux Simply Refresh



DISCOVER THE WORLD OF DULUX ONLINE

Want even more decorating inspiration? Sign up to our newsletter at dulux.co.uk/signup and get in touch through our social channels:



SHARE
Take a snap for Insta and inspire others to do the same
#feelgood colour



ASK DR DULUX
Share your decorating questions with our resident experts
#askdrdulux



YOUTUBE
Follow our handy how-to videos and go behind the scenes at
youtube.com/duluxuk



SOCIAL
Join the deco conversation and share your home makeovers on our social channels
@duluxuk

Choose your perfect colour:

1 EXPLORE OUR PAINT

1 Browse the fold-out colour chart in the middle of the magazine or head to dulux.co.uk.



2 VISUALISE YOUR SHADES

2 Imagine how hues will look at home with the **Visualizer App** – download it free today.



3 TRY BEFORE YOU BUY

3 Finally, see shortlisted shades on walls with **Roller Testers** – pick up in store or at dulux.co.uk.



OUR DULUX PROMISE

We promise our paint will give you the perfect colour with a uniform finish and the coverage stated, or we'll replace it. See p25 for T&Cs.



Natural
Hessian™

Nutmeg
White™



Copper
Blush™

1



2

LEFT Table: image copyright © 2020 West Elm; Ceramic Vase: image copyright © 2020 Nordic Nest

Colour lookbook

Create a sanctuary at home
with soothing neutral tones

Warm, welcoming and versatile, **earthy shades** are a trend that's set to stay. Not only do they help our homes feel more connected to nature, these cinnamon browns, terracotta tones, putty greys and raw linen colours provide a sense of calm from the chaos. Better still, they work brilliantly with **Brave Ground** – our rejuvenating **Colour of the Year 2021** – which is a neutral brown, inspired by stone, soil, clay and sand. What's great about the trend is how easy it is to mix and match your favourite shades in almost any room. For example, you could pick softer hues with **Brave Ground** as an accent in a bedroom, or try a blend of darker shades to make a living room feel sociable yet smart. Whatever the combination, earthy shades will turn your home into a haven.



WATCH OUR COLOUR OF THE YEAR
VIDEO AT [YOUTUBE.COM/DULUXUK](https://www.youtube.com/duluxuk)





Add texture with accessories to bring your earthy scheme to life – tactile cushions, timber grains and handmade ceramics



OBJECTS OF DESIRE

1 Layer your room with simple ceramics for an organic look – check out this curvy vase from **Nordic Nest**. It's ideal for filling with stems of pampas grass.

2 Brass elements, such as this **West Elm** side table, help to keep neutrals feeling warm and welcoming.

3 Add amber glass pendant lamps alongside earthy tones to create a soft glow – perfect when paired with exposed filament lightbulbs. This industrial-style fixture is from **Iconic Lights**.

4 A mix of contrasting textures creates interest, as with this wood and plush velvet armchair from our furniture retail partner, **DFS**, where you'll find a range of gorgeous pieces.

5 Bring in darker shades with soft furnishings. These cushions from **H&M** are an easy way to scatter deeper earthy tones throughout your home.



4



5



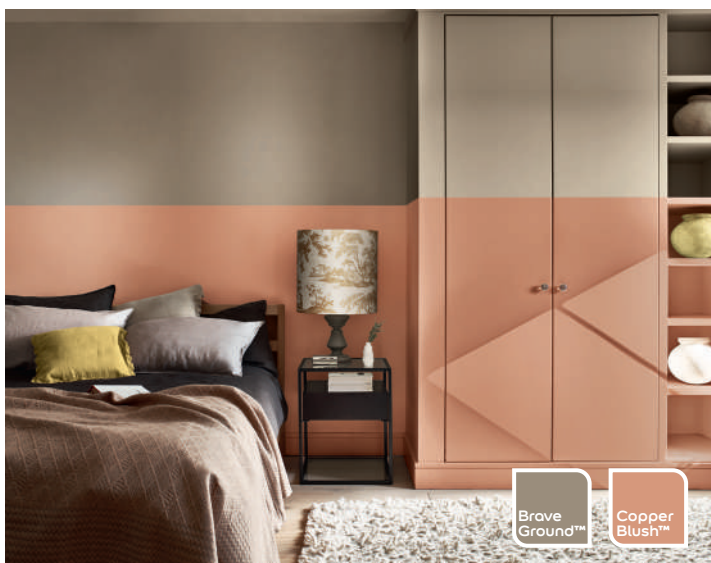
THIS PAGE Lamp: image copyright © 2020 Iconiclights.co.uk. Armchair: image copyright © 2020 DFS. Cushions: image copyright © 2020 H&M

Go back to nature with these three ways to add earthy shades to a room



BLISSFUL BATHROOM

Warm up white ceramics by painting walls in a light earthy colour, such as **Soft Stone**. Layer the look by finishing furniture in a deeper shade like **Perfectly Taupe**, and adding striking flooring, such as tiles from our partner, **Topps Tiles**.



WRAPAROUND COLOUR

Paint is a great way to create features. Try using two complementary shades, such as **Brave Ground** and **Copper Blush**, across the walls of a bedroom. The lighter shade on the top half of the wall serves as a calming backdrop, while the lower half forms a headboard and highlights the furniture.



Dulux Easycare Bathroom; Dulux Easycare Washable & Tough; NEW Dulux Simply Refresh Feature Wall



EXPERT
KNOW-HOW
Marianne
Shillingford

"New Dulux Simply Refresh is a quick and easy way to decorate your home – you only need a single coat and you're done. Try it in soothing **Natural Hessian** with New Dulux Simply Refresh Feature Wall in **Decadent Damson** – perfect for creating an inviting, cosy desk area."



Decadent
Damson™



Natural
Hessian™

Spotlight on...

Small kitchens



Fresh colours and clever storage solutions are key

Cosy kitchens can offer just as many style opportunities and storage solutions as larger spaces – you just need a little design savvy up your sleeve. Start by picking a tonal colour for the walls. Here, we've chosen the mellow wall hue **Overtly Olive** to complement the kitchen cabinets.

Overtly
Olive™

Willow
Tree™

Willow Tree™

LIGHT ON WHITE

A white tile splashback is easy to clean and will help reflect light back into the kitchen.



MAKE SPACE

Refreshing your kitchen cabinets with paint is an excellent way of quickly transforming the room, and by picking a pale tone – here we've chosen **Willow Tree** – you'll open up the area visually, helping to create a greater sense of space. Use **Dulux Quick Dry Satinwood**, which is water-based, meaning it's quick to dry and won't smell during the painting process.

Replacing your cabinet door handles will also instantly change their look and feel – go minimal and sleek with a contrasting tone to avoid the space looking cluttered.

SMART STORAGE

In a small kitchen, making it feel more spacious is key, and one of the best ways to achieve this is by including plenty of storage options. Channel Marie Kondo and be selective about what you have on display. Make sure that anything on open shelving adds to the overall look and style, and keep everyday clutter neatly tucked away behind cupboard doors. Here, we've painted the open shelving in the same **Overtly Olive** shade as the walls to help it subtly blend into the background.

“Pale tones really help open up the room visually”

TEXTURE TIPS

Creating a spacious look and feel doesn't mean keeping everything monotone and sparse. Instead, adding pops of contrasting colours and patterns through accessories can add bags of character to your kitchen, from bright kitchenware pieces to textured chopping boards and tonal textiles. Likewise, adding plants to shelves or corners will help soften the room's overall finish.



HEAD TO PINTEREST TO DISCOVER MORE 'SPOTLIGHT ON' INSPIRATION @DULUXUK



Dulux EasyCare Kitchen;
Dulux Quick Dry Satinwood



DO DETAILS

Bring some personality to the space by adding little pops of colour and texture.

The weekend project

Create a cosy zone with colour in an open-plan room

Whether you've knocked through or have a double-duty lounge, decorating a space that serves more than one purpose can be tricky. A statement feature wall is the perfect solution – not only does it add a shot of colour, it helps to subtly divide the space so that the different functions are clear. Plus, thanks to new **Dulux Simply Refresh Feature Wall** paints, you can achieve it in a single coat, leaving you plenty of time to style the space and put your feet up for the rest of the weekend. With a warm colour, such as **Blush Pink**, serving as a canvas, a feature wall in a deeper shade like **Acai Berry** will really pop. The ideal place for the feature wall is a focal point, so try it behind a sofa, around a fireplace or in an alcove, and remember that there's no need to paint the whole wall. A partial block of colour can be just as effective in defining a snug, welcoming area.

YOU'LL NEED

- Tape measure and pencil
- String and chalk
- Masking tape and scissors
- Paintbrush
- Paint from colour palette
- Stirring stick
- Roller and tray
- Extension pole

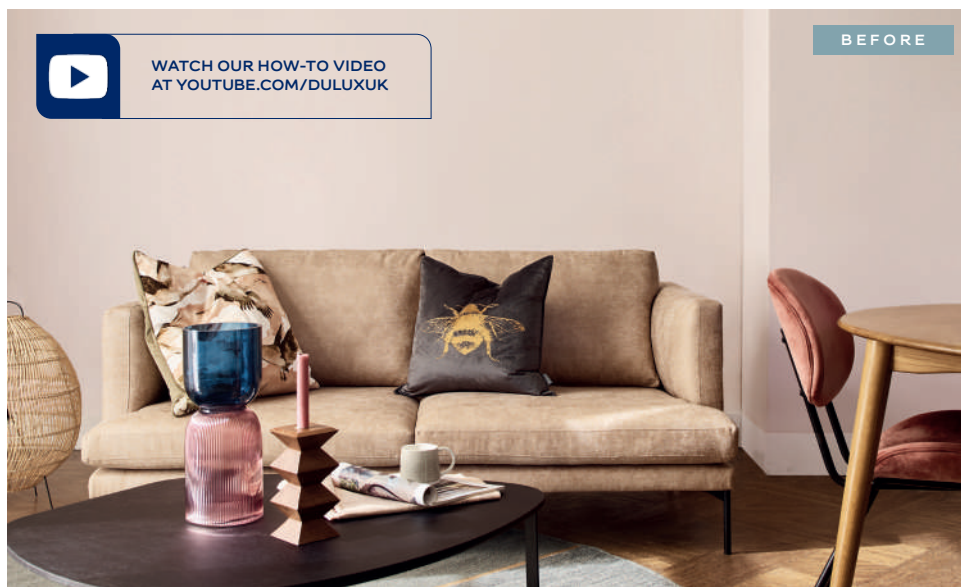


NEW Dulux Simply Refresh One Coat; NEW Dulux Simply Refresh Feature Wall; Dulux Quick Dry Satinwood



WATCH OUR HOW-TO VIDEO
AT [YOUTUBE.COM/DULUXUK](https://www.youtube.com/duluxuk)

BEFORE



AFTER



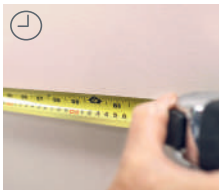
EXPERT KNOW-HOW
Marianne Shillingford

"If you're adding a feature colour, try using the 60-30-10 rule to maintain balance in the room. Use light shades for 60 per cent of the space so it'll always appear bright and inviting, the darker colour for 30 per cent and finally, 10 per cent for detailing or splashes of an accent shade."

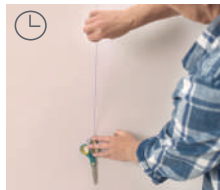


Tom sofa in Natural Leather Look from our partner DFS

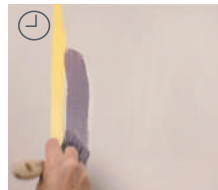
KEEP THINGS ON TRACK



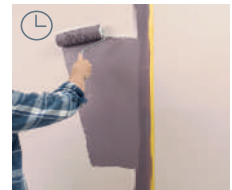
10 minutes
Begin by ensuring the section of wall you're about to paint is clean and dry. Then, use a tape measure to carefully mark where your feature wall will be positioned.



20 minutes
Wipe chalk along the length of a piece of string. Fix it to the wall along one outer edge of your feature area so it's taut, and 'ping' it to leave a line. Mask along the line, then repeat for the remaining edges.



30 minutes (+ drying)
Paint over the tape with your canvas colour (in our case, **Blush Pink**) to seal it and create a crisp edge. Once that's dry, apply one coat of **Acai Berry Simply Refresh Feature Wall** to the inner edge of the tape.



1 hour (+ drying)
Use a roller to paint the rest of the colour block in a single coat of **Acai Berry**, using an extension pole for the highest points of the wall. Leave to dry, and admire your results.

My colour story

Our readers share the shades that make their dream home



CASE STUDY ONE

“Decorating our new home really helped us embrace a different way of life”

For Nicky Rampley-Clarke and his husband John, moving to the Surrey countryside was both exciting and daunting. “We knew we were up for a challenge after transforming our terraced house in Tooting,” says Nicky. “But we were also nervous about moving out of the city – we’re young, and we love socialising and entertaining our friends and family, so we wanted to make the house feel youthful and bold.”

Moving in April 2020, mid-lockdown, meant that getting their living space right took on even greater significance. “We knew the house had potential, but it needed a creative overhaul. Initially, we had planned to start on the bedrooms, but when we realised we would be working from home, the downstairs living areas became our priority.” To achieve their vision even faster and with a crisp finish, Nicky and John decided to call in a professional decorator.

Starting in what would become the office, Nicky wanted a calming colour that would allow him to concentrate, “but still feel stylish and homely”. He

chose **Sapphire Salute**, opting for a silk finish to add a slight sheen. “I love walking in there now – it’s bold but sleek, and it’s become a little oasis.”

Sapphire Salute™



GO BEHIND THE SCENES AT
[YOUTUBE.COM/DULUXUK](https://www.youtube.com/duluxuk)





Sapphire Salute™

WORK AND PLAY

"We definitely took some decoration inspiration from a few of our favourite TV shows, and the home bar set up in the office is pure *Mad Men*, stocked with crystal decanters our parents collected over the years," says Nicky.

The couple also loved *Greenleaf* – a Netflix series about a wealthy family from Memphis, Tennessee – and took a few cues from the amazing mansion the family lives in. "In particular, we chose really dark, high-polish wooden floors, which add a strength of character to the house that was a bit lacking before. A few of our friends tried to change our minds, but now they can see our vision really works."



COMPLEMENTARY COLOURS

Making sure the house was youthful and vibrant was especially important to Nicky and John. "We wanted to live in the country, but not necessarily in a house that screamed it," says John. "The original structure was built in the 1940s, and then the previous owners extended substantially about 10 years ago, so the house didn't have anything in the way of period features."

The couple decided that alternating bold colours with gentler hues would help give it that stamp of personality they wanted. "The colours layer together really beautifully, from the punchy **Copper Blush** of the gym to **First Dawn** in the lounge, and then **Sapphire Salute** in the office," says Nicky. "We've also added little accents of those colours elsewhere in prints and pictures, so the whole ground floor really comes together, despite some of the colours being quite bold."



Dulux Easycare Washable & Tough;
NEW Dulux Simply Refresh One Coat



Sapphire Salute™

First Dawn™

Copper Blush™



Blush
Pink™

Natural
Slate™

Timeless™

"We wanted visitors to feel at ease as soon as they walked in, so we chose **Natural Slate** for the front door, **Blush Pink** for the hallway, and added wood panelling in **Timeless** to bring character and draw the eye through the house," says Nicky. This also created the starting point for their other colour choices. "I made a floorplan and added colour swatches to different rooms," says Nicky. "That helped us work out the balance of delicate and bolder shades, which really add to the house's sense of personality."

CASE STUDY TWO



“Before we decorated, I used to avoid spending time in the kitchen. Now it’s my favourite room”

Redecorating the kitchen was a long time coming for Lisa Smart and her husband Martin. “I was so embarrassed by the dated décor, I would usher my friends out of the room when they visited, but we knew it would be pricey to replace,” says Lisa. Then, in February 2020, the Wickford-based couple realised they could remove the breakfast bar and repaint their units instead. “We chose **Polished Pebble** for the cupboards, then our focus was finding the right wall colour,” says Lisa. “I fancied a blue, but I also wanted a bright, spacious feel. As soon as I put **Denim Drift** on the wall, I knew it was the one. Now I love spending time and entertaining in here.”



Dulux Easycare Washable & Tough;
Dulux Quick Dry Satinwood

MODERN MEETS RUSTIC

“I loved trawling Pinterest for inspiration,” says Lisa. “I wanted a modern space with a hint of country, and I think the **Denim Drift** against the rustic table and white countertop really works. I replaced an old chandelier with three glass drop lights and have fresh flowers on the table as the centrepiece.” Formerly a wallpaper devotee, Lisa says decorating the kitchen has transformed her way of thinking. “I can’t wait to refresh other rooms with paint – it’s so simple and makes such a huge difference. It’s really brought the kitchen to life.”



Denim Drift™

AFTER



**EXPERT
KNOW-HOW**
**Marianne
Shillingford**

“Choosing a soothing, nature-inspired colour for your kitchen helps create a serene space – which is all the more important while we’re spending so much time at home. Plants and botanical-print textiles enhance the natural theme and help bring the room together.”



SHARE YOUR OWN COLOUR
STORY WITH US @DULUXUK
USING #FEELGOODCOLOUR



Micro makeovers

2 hrs

Brighten up your home instantly with these quick, easy paint projects

Want to supercharge studying or add wow to your workday? It's time to give your old desk a new lease of life with a lick of paint. The best bit is that if you're only painting the tabletop, this is an even speedier project and a great way to use leftover paint. Plus, as the colour is only in a small space, you can be bolder with your selection. A deep green, such as **Teal Velvet** in **Dulux Quick Dry Satinwood**, is both soothing and chic.



 WATCH OUR HOW-TO VIDEO AT [YOUTUBE.COM/DULUXUK](https://www.youtube.com/duluxuk)

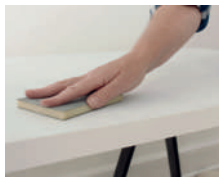
Teal Velvet

Blush Pink™

STEP-BY-STEP GUIDE



50 minutes (+ drying)
Lay down a dust sheet. Sand the desk top (and legs, if painting). Brush off any dust and wipe down with a cloth. Use a small roller to apply **Dulux Primer for Difficult Surfaces**. Leave to dry for 4-6 hours.



10 minutes
Lightly sand the primed surfaces to ensure a smooth painting surface, then wipe down with a damp cloth. Open a can of **Dulux Quick Dry Satinwood** and stir.



50 minutes (+ drying)
Apply the first coat of paint, using a small roller for the desktop and a paintbrush for the sides and legs, if painting. Leave to dry, then apply a second coat.



10 minutes (+ drying)
As soon as the second coat is on, use a paintbrush to redistribute the paint, ensuring the brush strokes follow the same direction. This ensures a smooth and even finish.

All your favourite colours at a glance*

Colours for walls & ceilings

Product Key > Dulux Matt & Dulux Silk Emulsion Easycare™ Washable & Tough Easycare™ Bathroom Simply Refresh One Coat Easycare™ Kitchen Light+Space™ Simply Refresh Feature Wall

 Ivory 	 Buttermilk 	 Cookie Dough 	 Soft Truffle™ 	 Heartwood™ 	 Cannon Ball™ 	 Rich Black™ 	 Ink Well™ 	 Indigo Shade™ 	 Teal Tension™ 	 Emerald Glade™
 Natural Wicker™ 	 Orchid White™ 	 Soft Stone™ 	 Malt Chocolate™ 	 Perfectly Taupe™ 	 Urban Obsession™ 	 Deel Fossil™ 	 Sapphire Salute™ 	 Nordic Sky™ 	 Teal Touch™ 	 Proud Peacock™
 Magnolia 	 Natural Calico™ 	 Caramel Latte™ 	 Gentle Fawn™ 	 Pebble Shore™ 	 Natural Slate™ 	 Warm Pewter™ 	 Stonewashed Blue™ 	 Blue Babe™ 	 Marine Splash™ 	 Kiwi Crush™
 Ivory Lace™ 	 Jasmine White™ 	 Natural Hessian™ 	 Nutmeg White™ 	 Egyptian Cotton™ 	 Chic Shadow™ 	 Misty Mirror™ 	 Denim Drift™ 	 First Dawn™ 	 Mint Macaroon™ 	 Melon Sorbet™
 Frosted Dawn™ 	 Timeless™ 	 Just Walnut™ 	 Summer Linen™ 	 Moon Shimmer™ 	 Polished Pebble™ 	 Goose Down™ 	 Tranquil Dawn™ 	 Coastal Grey™ 	 Lagoon Falls™ 	 Apple White™
 White Cotton™ 	 Fine Cream™ 	 Almond White™ 	 Desert Wind™ 	 White Mist™ 	 Rocksalt™ 	 Cornflower White™ 	 Frosted Steel™ 	 Mineral Mist™ 	 Ocean Ripple™ 	 Nordic Spa™

Brave Ground™						Limited-edition Colour of the Year 2021						Absolute White Light+Space™ & Pure Brilliant White also available					
 Everglade Forest™ 	 Golden Sands™ 	 Blood Orange™ 	 Raspberry Diva™ 	 Pepper Red™ 	 Decadent Damson™ 	 Overtly Olive™ 	 Banana Split™ 	 Copper Blush™ 	 Pressed Petal™ 	 Berry Smoothie™ 	 Acai Berry™ 	 Mossy Stone™ 	 Lemon Pie™ 	 Soft Peach™ 	 Mellow Mocha™ 	 Pretty Pink™ 	 Lavender Quartz™
 Willow Tree™ 	 Vanilla Sundae™ 	 Honey Beam™ 	 Blush Pink™ 	 Spring Rose™ 	 Dusted Fondant™ 	 Jade White™ 	 Wild Primrose™ 	 Daffodil White™ 	 Soft Coral™ 	 Jasmine Shimmer™ 	 Violet White™ 	 First Frost™ 	 Lemon Spirit™ 	 Lunar Falls™ 	 Coastal Glow™ 	 Morning Light™ 	 Cotton Breeze™

Colours for wood & metal

 Black Quick Dry Gloss, Quick Dry Satin, Quick Dry Eggshell, Non-drip Gloss, Once™ Gloss, Once™ Satinwood	 Natural Slate™ Quick Dry Gloss, Quick Dry Satin, Quick Dry Eggshell, Non-drip Gloss, Once™ Satinwood	 Perfectly Taupe™ Quick Dry Gloss, Quick Dry Satin
 Chic Shadow™ Quick Dry Gloss, Quick Dry Satin	 Goose Down™ Quick Dry Gloss, Quick Dry Satin	 Natural Hessian™ Quick Dry Gloss, Quick Dry Satin, Once™ Satinwood
 Polished Pebble™ Quick Dry Gloss, Quick Dry Satin, Quick Dry Eggshell	 Egyptian Cotton™ Quick Dry Gloss, Quick Dry Satin	 Natural Calico™ Quick Dry Gloss, Quick Dry Satin, Quick Dry Eggshell, Once™ Gloss, Once™ Satinwood
 White Cotton™ Quick Dry Gloss, Quick Dry Satin, Quick Dry Eggshell, Non-drip Gloss, Once™ Satinwood	 Timeless™ Quick Dry Gloss, Quick Dry Satin, Quick Dry Eggshell, Non-drip Gloss, Once™ Satinwood	 Magnolia™ Quick Dry Gloss, Quick Dry Satin, Quick Dry Eggshell, Once™ Gloss, Once™ Satinwood
 Jasmine White™ Quick Dry Gloss, Quick Dry Satin, Once™ Satinwood	*If you can't find your colour in our Ready Mixed range, you can get any colour mixed at selected stores	
 Mineral Mist™ Quick Dry Gloss, Quick Dry Satin	 Willow Tree™ Quick Dry Gloss, Quick Dry Satin	 Pretty Pink™ Quick Dry Gloss, Quick Dry Satin

Brave Ground™



TRY BEFORE YOU BUY

See for yourself

Our mess-free, easy-to-apply **Roller Testers** go straight on to your wall without the need for any additional kit. They let you see how your shortlisted shades actually look in your home, so you can choose your final colours with confidence. If you're using our colour match service, ask for a 250ml sample tin, so you can try it out. **You can pick up our Roller Testers in store, or order at dulux.co.uk or through the Visualizer app, and they'll be delivered straight to your door.**



OUR DULUX PROMISE

We promise our paint will give you the perfect colour with a uniform finish and the coverage stated, or we'll replace it. Visit dulux.co.uk/promise.



Terms and conditions apply
Claims must be made within 6 months of purchase. Proof of purchase required. Colour claims limited to 10 litres per customer. Manufacturer's tips and instructions must have been followed. UK purchases only.

Dulux Weathershield

Exterior walls masonry

Black Smooth Masonry	Muted Gold Smooth Masonry	County Cream™ Smooth & Textured Masonry	Warm Truffle™ Smooth Masonry	Concrete Grey Smooth Masonry
Brick Red Smooth Masonry	Sandstone Smooth & Textured Masonry	Cornish Cream Smooth Masonry	Green Ivy™ Smooth Masonry	Pale Slate™ Smooth Masonry
Toasted Terracotta™ Smooth Masonry	Magnolia Smooth & Textured Masonry	Classic Cream Smooth Masonry	Frosted Lake™ Smooth Masonry	Ashen White™ Smooth Masonry
Buttermilk Smooth Masonry	Gardenia™ Smooth Masonry	Jasmine White™ Smooth Masonry	Pure Brilliant White Smooth & Textured Masonry	

Exterior wood & metal

Black Gloss & Satin	Hazelnut Truffle™ Satin	Heathland™ Satin	Oxford Blue Gloss & Satin	Gallant Grey™ Gloss & Satin
Royal Berry™ Gloss	Conker™ Gloss	Buckingham Gloss	Indigo Shade Satin	Chic Shadow Satin
Monarch™ Gloss	Celtic Cream™ Satin	Green Glade™ Satin	Teal Voyage Satin	Pure Brilliant White Gloss & Satin
Cranberry Crunch™ Gloss	Almond White™ Satin	Garden Grey Satin	Misty Sky™ Satin	

Multisurface

Black Quick Dry Satin	Gallant Grey™ Quick Dry Satin	Green Glade™ Quick Dry Satin	Almond White Quick Dry Satin	Pure Brilliant White Quick Dry Satin
Hazelnut Truffle™ Quick Dry Satin	Chic Shadow Quick Dry Satin			



SHAPE UP

Add depth to a blank wall with a feature arch – just the job for framing a piece of furniture. Contrasting colours work best, such as **Gentle Fawn** with **Emerald Glade**. To trace the arch, chalk a weighted length of string and 'ping' it against the wall to mark the vertical sides. Apply masking tape along the lines. Measure halfway across the top of the arch, between the taped lines, and pin one end to this midpoint. Tie a pencil to the other end where it meets your masking tape. Keeping the string taut, draw a curve from one tape to the other, forming the top of the arch. Paint along the top of the arch freehand, and use a roller to fill in the rest.



NEW Dulux Simply Refresh One Coat; NEW Dulux Simply Refresh Feature Wall

OMBRE EFFECTS

There's no better way to bring a set of shelves to life than with statement colour blocking. All you need is three coordinating hues – a darker one for the centre shelf to draw the eye, such as **Golden Sands**, a mid-tone for the shelves above and below it, such as **Almond Butter**, and a pale shade, such as **Cobble Cove**, for the outer shelves. Pin a piece of string to the centre point, with a pencil on the end to draw your circle, divide it into fifths and paint each wall section as shown. Prep the shelves as for the tabletop (opposite), with **Dulux Primer & Undercoat for Wood**, then paint in matching colours with **Dulux Quick Dry Satinwood**.



Dulux Primer & Undercoat for Wood; Dulux Quick Dry Satinwood; Dulux Easycare Washable & Tough



Colour choice made easy

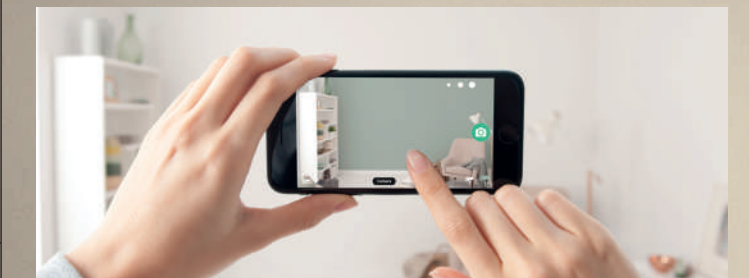
Find your perfect colour match with our simple step-by-step system

EXPLORE OUR PAINT

1 Browse the range
Use this handy fold-out chart to see our colour range at a glance and get a feel for your favourites – not only do we have everything you need for your interior walls, but for your exterior masonry, too. If you've already got a favourite colour, take a sample in store – it might be a textile or a treasured keepsake – and we'll colour match and mix a paint especially for you.



VISUALISE YOUR SHADES



2 Imagine the possibilities
See our colours on your walls with the **Visualizer app**. Simply download for free (from the App Store or Google Play), scan your room with a phone or tablet, and virtually paint the walls with a tap of the screen. It's never been easier to experiment with hues in your home!

Ask Dr Dulux

We're here to help with all your decorating dilemmas



“How do I prepare my brick walls for painting?”

MARK, CHELMSFORD

Ask Dr Dulux

HAVE A QUESTION FOR DR DULUX? JOIN AN INSTAGRAM Q&A SESSION @DULUXUK

Giving your exterior walls a new lease of life is easy if you use the right products

1 First things first: make sure your brickwork is completely dry and that there's no wet weather forecast. For the best results, you should aim to paint your brickwork on a dry, mild day – ideally 10°C or warmer.

2 Scrape and brush any loose or flaky material from the brickwork, including any dirt or grease. If there are areas of mould or lichen, treat the wall with **Weathershield Multi-Surface Fungicidal**

Wash. If your brickwork feels powdery to the touch, apply a coat of **Weathershield Stabilising Primer**.

3 Use a natural bristle masonry brush to apply two coats of **Dulux Weathershield All Weather Protection Smooth Masonry Paint** – we've opted for **Concrete Grey** with a feature circle in **Jasmine White** – leaving 4 hours between coats. Allow to dry completely, then admire your newly refreshed wall.

Ask Dr Dulux

“How can I use paint to make my awkwardly shaped rooms and low ceilings feel more spacious?”

ANNE, WORCESTER

“I live in a converted property and all the rooms are different sizes. The top floor also has a ceiling that slopes away at the eaves. How can I decorate to make the most of my space?”



IDEA #1

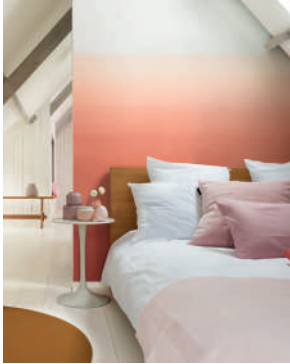
PICK PALE SHADES

If you're trying to make a low ceiling feel higher, light hues, such as **Tranquil Dawn**, are the best option rather than cosy dark tones. However, adding height is about more than colour, it's also how you use it. Rather than painting the walls and ceiling in two shades, use the same for both. This stops the eye from being drawn to the division between the two, making the ceiling appear higher.

Tranquil
Dawn™

IDEA #2

FIND THE FOCAL POINT



Copper
Blush™

Jasmine
White™

Awkwardly shaped rooms usually have one thing in common, and that's broken sightlines that make the space feel disjointed. Instead of struggling against this separation, celebrate it by defining different areas with colour. Using paint to add focal points will help to ease the transition from one area to another and give each zone a clear purpose.

BLUR THE BOUNDARIES

Another trick to try in an unconventionally shaped room is an ombre effect. This works in the same way as vertical stripes in that it helps a room to feel wider, while the graded colour visually raises the ceiling height. As only the lower part of the wall will be dark, aim to choose a bold shade, such as **Copper Blush**.

This technique can be especially effective in a bedroom, where the bands of colour can serve as a painted headboard; or in a multifunctional room, such as a lounge with a dining area.



Dulux Easycare Washable & Tough; Dulux Quick Dry Satinwood; Dulux Light + Space



CLEVER COLOUR

Using two colours will help to draw the eye through your hallway

Mineral
Mist™

White
Mist™

IDEA #3

MAKE AN ENTRANCE

H allways have a tendency to be narrow and gloomy, but there's no reason why they can't feel wide and welcoming. A clever use of colour and a few design tricks are all you need. First, create a blank canvas with the right paint. **Dulux Light+Space** includes light-reflecting particles that will make the whole space feel brighter overall.

Next, paint sections of the hallway in different colours, which will help to break up its long, narrow appearance. This could be an arch over a

console, a strip running the length of the wall or even the ceiling in an uplifting shade, as we've done here with **Mineral Mist** on **White Mist**. The idea is to draw the eye along the length of the corridor rather than focus on the proximity of the walls.

Another option to help distract from the narrow aspect of the walls is to paint the floor or doors leading off from the hallway in a darker shade. This helps create a 'pathway' through the narrow space and defines its features.

Ask Dr Dulux

“How should I paint a radiator?”

PETER, NORTHALLERTON

They're in every room of the house, but we don't often give our radiators a second glance, much less a fresh look. The good news? With the right know-how, it's easier than you might think



HAVE A QUESTION FOR DR DULUX? JOIN AN INSTAGRAM Q&A SESSION @DULUXUK

Polished Pebble™

Natural Slate™



Dulux Easy Care Washable & Tough; Dulux Quick Dry Satinwood; Dulux Multi Surface Primer & Undercoat

1

PREPARATION IS KEY

Ensure your radiator is turned off and cold. Use a piece of 'wet and dry' abrasive paper with a drop of detergent and warm water to rub the surface evenly, then rinse and dry. If you're left with any bare patches, make sure you prep them with **Dulux Multi Surface Primer & Undercoat** – it'll protect your radiator from rust and ensure your paint adheres to the surface nicely.

2

TOOLS AT THE READY

Next up, make sure you've got the right kit for the job. You'll need a paint suitable for metal, such as **Dulux Quick Dry Satinwood**, and a natural bristle brush. And remember, radiators don't have to be white. Use your imagination: you might want to paint them to blend in with your wall colour, or even pick a bold, contrasting colour to make a feature of them.

3

PROTECT AND PERFECT

Use masking tape to cover off valves and pipe work, and pop a dust sheet underneath the radiator to catch any stray paint drops. Then, get painting: start at the edges, then paint the face in a vertical direction using long, sweeping brush strokes to get a neat, even finish. Leave for at least six hours before applying a second coat, then allow to dry fully before turning on the radiator.



“How can I use colour effectively in a small bathroom?”

DAVID, CORBY

Don't default to painting the walls of tiny spaces white. As long as a bathroom is well lit, you can use colour in the same way as in any other room.

Do consider darker shades, such as slate grey, rich purple or deep blue. They'll add depth to help a small bathroom feel cocooning and, paired with crisp white ceramics, create a dramatic effect.

Do try painting just the upper or lower half if you're not sure about covering whole walls in colour. Soothing tones, such as sage green, plaster pink and earthy mustard, work well.

Teal Touch™



Dulux EasyCare Bathroom;
Dulux Quick Dry Satinwood

Ask Dr Dulux

“My kids share a room – how can I give each their own space?”

CAMILLA, FARNHAM

Create a design divide that'll give each child a distinct area – and you some much-needed peace

Siblings: at once life-long besties and fierce rivals. Never is this truer than when they're sharing a common space, but don't worry – there are some smart solutions for giving each of your children their own sanctuary within the same room. Here, we've created colour-led dividing lines to demarcate each child's space, with bold stripes in **Overtly Olive** and **Soft Peach** on **Rock Salt** offering a definitive contrast. Both sides of the room are then accessorised in similar tones, creating a mirror-image space that still allows each sibling their own identity and ownership – enhanced by personalised wall prints of their initials. A shared bedside table, rug and



Dulux Easycare Washable & Tough
20 times tougher than standard Dulux Matt

Ask Dr Dulux

HAVE A QUESTION FOR DR DULUX? JOIN AN INSTAGRAM Q&A SESSION @DULUXUK



eye-catching poster create a centrepiece, while the diagonal wall stripes which meet at the ceiling create dynamic lines to draw the eye upwards and enhance the sense of space. Now the only challenge is for them to tidy it symmetrically...

AFTER



Overtly
Olive™

Soft
Peach™

Rock
Salt™



**EXPERT
KNOW-HOW**
Matt Gray

"When it comes to painting your door, start with the mouldings and then work your way onto the panels. Begin using strokes that follow the grain, before switching direction to cut across those lines. Then revert back to your original direction. This layering will give you an even finish."

Green
Glade

Sandstone™

“How can I give my uPVC front door an easy refresh?”

CLAUDIA, WINCHESTER

Your front door plays a major role in your property's appearance and kerb appeal – after all, it's the first thing visitors see when they arrive. Luckily, it's also something that's easily refreshed, even if your door is made from uPVC. All you need are the right products – such as **Dulux Primer for Difficult Surfaces** to prep your surface, followed by a top coat of **Dulux Weathershield Quick Dry Exterior Satin** – and in just a few hours your door will look as good as new. Try the timeless tones of **Green Glade** for an instant character boost.

YOU'LL NEED

- Bucket and sponge
- Dust sheet
- Sandpaper
- Dusting brush
- Masking tape
- Primer and paint
- Stirring stick
- Paintbrush



Dulux Primer for Difficult Surfaces; Dulux Weathershield Quick Dry Exterior Satin



1 Begin by wiping down your door with a sponge and soapy water to remove any dirt or grease. Dry the surface and place a dust sheet beneath the open door.



2 Lightly sand your door surface. This will create a good key for the primer to adhere to.



3 Use the dusting brush to remove any residual dust.



4 Mask off the door handle and any other details. Next, apply a coat of **Dulux Primer for Difficult Surfaces** and allow to dry.



5 Stir the **Dulux Weathershield Quick Dry Exterior Satin** well, then apply the first coat evenly using long, sweeping strokes.



6 Allow your first coat to dry for four hours before applying a second. Make sure your door is completely dry before closing it.

Ask Dr Dulux

“How do I work out how much paint I need for different projects?”

MICHELLE, HYTHE

Guesstimates be gone: here's how to calculate your paint requirements

Measure up

Grab a tape measure and work out the height and width of the surface you want to paint. Multiply the two together to get your square metre (m²) measurement. Subtract any windows or doors by using the same calculation method and deducting it from the total.

Calculate your coats

If you're using **Dulux Simply Refresh**, you'll only need to apply one coat of paint. If you're opting for an even more durable finish with **Dulux EasyCare Washable & Tough**, multiply your number by two (the number of coats needed).

Divide and conquer

Finally, divide the number by the m² per litre listed on your paint tin, or in the online product information. Voila! You've worked out the amount of paint you need.

PAINT BY NUMBERS: AT A GLANCE

ROLLER TESTER

Enough for a small patch on a wall



INTERIOR WOOD AND METAL

Perfect for a door or the skirting in a small room



FEATURE WALL

Ideal for painting a 2.5m interior wall



SMALL ROOM

Enough for all walls in a 2m x 2m or equivalent room



MEDIUM ROOM

Enough to cover all walls in a 4m x 4m or equivalent room



Quantities are typically for two coats

COMMUNITY SPIRIT



If you do end up with some leftover paint at the end of a project, why not donate it to **Community RePaint** – a **Dulux**-sponsored, UK-wide paint recycling scheme that collects and redistributes paint to improve lives within communities. Find a participating centre near you at communityrepaint.org.uk.

Ask
Dr Dulux

GET MORE LEFTOVER PAINT
INSPIRATION FROM OUR VIDEO
ON [YOUTUBE.COM/DULUXUK](https://www.youtube.com/duluxuk)



Call the professionals

Wondering what to ask the pros before they decorate your home? We've got you covered

1

IN TRUSTED HANDS

It's a big undertaking to have work done in your home, so knowing your tradespeople come recommended can offer real peace of mind. By choosing a professional from the **Dulux Select Decorators** scheme, you can rest easy knowing that they have been rigorously assessed for quality workmanship and superior industry knowledge.

2

BEFORE WORK BEGINS

Now more than ever, it's worth asking your professional about what safety precautions they routinely take and the equipment they use, to ensure both you and they are safe. These might include a risk assessment ahead of work starting, avoiding unnecessary visits to your property, maintaining a safe distance and, where necessary, wearing PPE while they're in your home. It's best to agree a plan before the job starts for peace of mind all round.

3

PAINT PERFECTION

Talk to your decorator ahead of time about what type of paint you'll need for the job, and the different finish options available. As the name suggests, matt paint is smooth and velvety, helping to hide imperfections, while satin and silk offer mid-sheen finishes that reflect a bit of light. Eggshell sits somewhere between matt and silk, while gloss offers a high-shine finish. Ask your decorator which they'd recommend for your job, and why.



CAREFULLY SELECTED FOR YOU

Our **Dulux Select Decorators** have been expertly selected with our customers firmly in mind, and their work comes with our guarantee. It's the directory you can trust for top decorators in your area. Go to duluxselectdecorators.co.uk

Paint picker

Choose the right paint with our product guide



With more than 30 years' DIY and decorating experience under his belt, what Skills Development

Consultant and resident paint pro Matt Gray doesn't know about paint isn't really worth knowing.

"Using the right type of paint is essential if you want a finish that will look good and really last," says Matt. "There are a number of specialist products to help you make the most of your efforts, so use this handy guide to suss out which you need and you'll be well on your way to painting perfection."

NEW PRODUCTS

Rejuvenating your home has never been easier thanks to our new Simply Refresh paint: two ranges specially designed to achieve incredible results in one easy coat. See terms and conditions information on p44.



ONE COAT WONDER
NEW Dulux Simply Refresh One Coat
Refresh your paintwork in one easy coat thanks to this extra-thick, hassle-free formula.



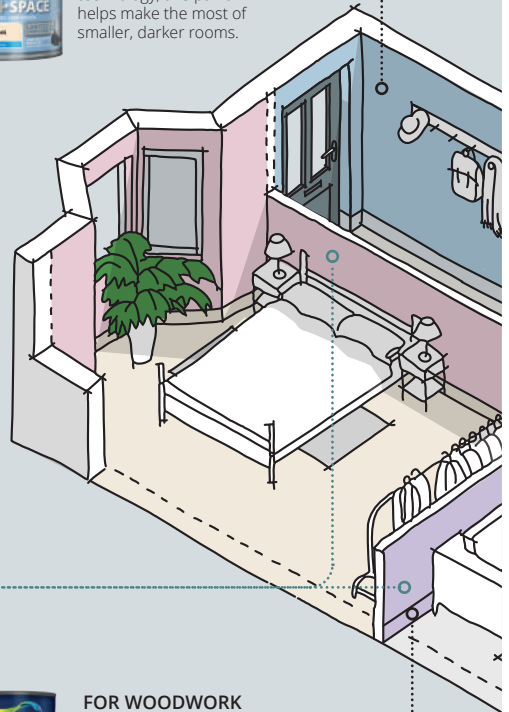
FOR FEATURE WALLS
NEW Dulux Simply Refresh Feature Wall
Creating a striking feature wall has never been simpler with this easy-to-apply paint in a range of bold shades.

KNOW YOUR ZONES

WHICH PAINTS GO WHERE?



FOR DARK AREAS
Dulux Light+Space
With built-in light-reflecting technology, this paint helps make the most of smaller, darker rooms.



FOR WOODWORK AND METAL
Dulux Quick Dry
Touch dry in just one hour, this time-saving paint is ideal for use throughout the home.

FOR EXTERIOR MASONRY/WALLS



Dulux Weathershield All Weather Protection
For masonry, render, concrete, pebble-dash & brickwork. Stay clean technology protects against all weather conditions for 15 years' long lasting protection.



**FOR BATHROOMS
Dulux Easycare
Bathroom**

This tough paint is steam- and moisture-resistant to stay looking good for longer.



**FOR BUSY
LIVING SPACES
Dulux Easycare**

A washable and stain-repellent paint that takes the stress out of spills. Great for kids' bedrooms, too.



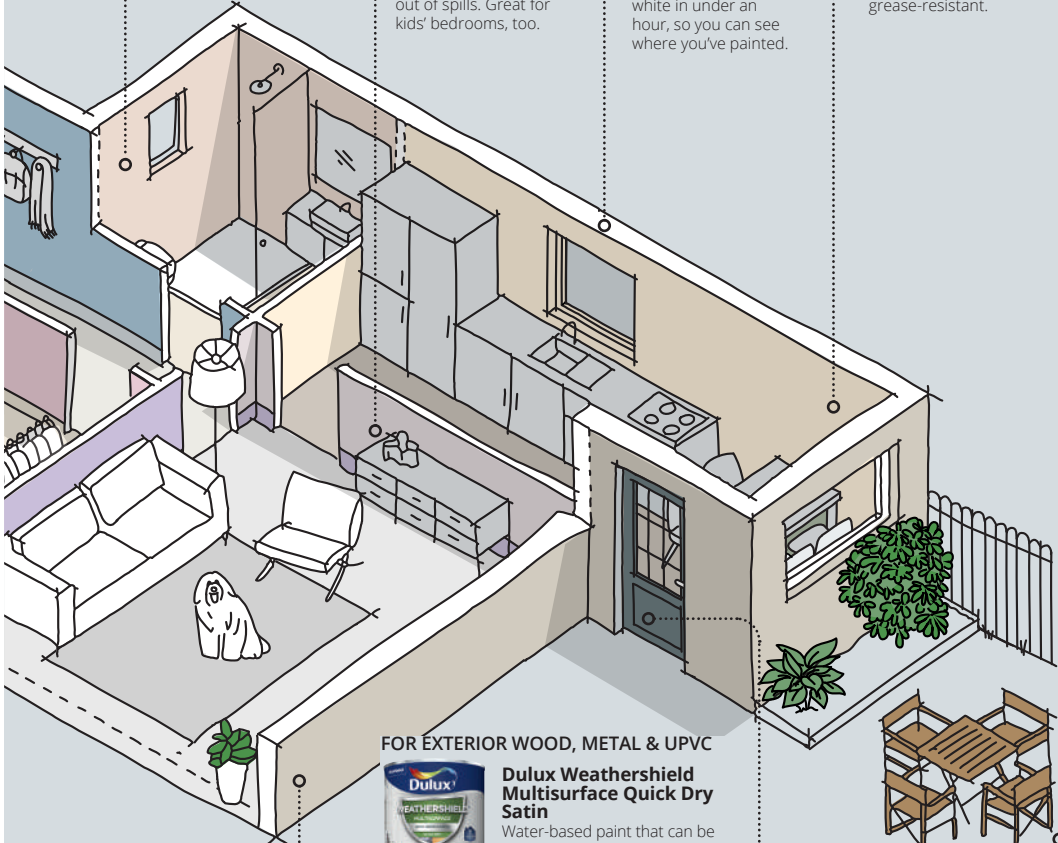
**FOR CEILING
Dulux Magic
White**

Never miss a spot again with paint that fades from pink to white in under an hour, so you can see where you've painted.



**FOR KITCHENS
Dulux Easycare
Kitchen**

A hard-wearing, washable matt paint that's also grease-resistant.



FOR EXTERIOR WOOD, METAL & UPVC



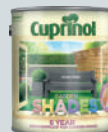
**Dulux Weathershield
Multisurface Quick Dry
Satin**

Water-based paint that can be applied directly to Wood, Metal & uPVC, (no primer required) with 6 years guaranteed protection.



**Dulux Weathershield
Exterior Quick
Dry Satin**

Water-based, quick-drying paint for Exterior Wood & Metal with 10 years guaranteed protection.



**FOR GARDEN
WOODCARE
Cuprinol
Garden Shades**

Protection and colour for wooden fences, furniture and sheds.



The ultimate toolkit

Choose your tools correctly first time round and you can reuse them again and again

THE BASICS

Don't spend a fortune on lots of tools. Instead, invest in the essentials up-front, and buy additional items as and when you need them



Synthetic-bristle brushes

Versatile, long-lasting and well suited to the application of water-based paints, a collection of different-sized synthetic-bristle brushes will see you through most decorating projects.



Roller and tray

For large surface areas, a roller is recommended as it applies paint faster and with a more even finish. A medium-pile roller should do the trick for both ceilings and walls.

THE PREP SET

Spend that little bit of extra time on prep before you begin painting – it will make the rest of the decorating process much less painful!



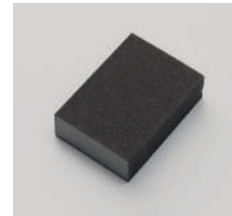
Dust sheets

Protect floors and furniture by covering exposed surfaces with good-quality dust sheets that you can keep and reuse for every project.



Filling knife

Achieve a great-looking finish on surfaces by using a filling knife to apply the right filler to damaged areas. Be sure you swap to a more flexible filler (decorators' caulk) where walls meet woodwork.



Sandpaper and sanding blocks

Buy different grades of sandpaper to make prep smoother. Look out for flexible blocks as these can be used on a variety of surfaces, such as doors and skirting.

THE PAINT PICKS

Add to your decorating arsenal as you work on different projects around the house – building your toolkit as you go means you don't end up buying unnecessary items



Stirring stick

Paint can separate in the tin, so stir it well before applying to ensure the colour and consistency are as they should be.



Stepladder

Being able to reach all areas in the room safely is crucial, so make sure you use a good-quality stepladder that's tall enough for the job.



Extension pole

Painting large surface areas and hard-to-reach places can be made easier by attaching your roller to the end of an extension pole.



**EXPERT
KNOW-HOW**
Matt Gray

"Keep the door to the room you're working in firmly shut, so kids and pets stay safely out of the way. Ensure ventilation is good before you begin, to reduce the smell and help fresh paint dry. Wear safety glasses to shield your eyes from any spray from the roller. Finally, decorate in decent natural light and avoid the temptation to rush. Good work takes time – and the results are worth it."



Dusting cloths and brush

Have dusting cloths and a brush to hand as they're useful for getting rid of dust and wiping down surfaces before painting, especially if you've sanded beforehand.



Masking tape

Invest in masking tape to protect surfaces you don't want to get paint on. Good-quality tapes also reduce the risk of paint seeping underneath and give visibly sharper, cleaner lines.



Additional rollers

Like brushes, rollers come in all different sizes, so there shouldn't be any surface area you can't paint.



Brush comb

Clean brushes with this dedicated comb, used at an angle to remove excess paint from bristles. It makes cleaning easier and quicker.

The roll call

Wondering which roller to use for which job? Here's our handy guide

Medium-pile roller

A medium-pile roller is ideal for water-based matt and silk paints. Designed for internal walls and ceilings, the synthetic fibres hold more paint so you don't need to reload as often.



Long-pile roller

Perfect for textured surfaces such as external walls, long-pile rollers are able to get into the areas a shorter-pile roller might struggle with – but avoid using them on internal walls.



Mini roller and longer-reach frame

Suitable for use on wooden surfaces, including furniture, skirting boards and internal doors, the mini roller creates a smooth, even finish. The 20" longer-reach frame helps you get to those trickier spots.



Extension pole

Painting walls and ceilings is a doddle with the help of a roller extension pole, which can be fitted to most roller arms – just check if you need a push fit or a threaded handle.



WATCH OUR HANDY VIDEO GUIDE ON ROLLERS AT [YOUTUBE.COM/DULUXUK](https://www.youtube.com/duluxuk)

#feelgoodcolour

It's easy to share your home transformations with us using #feelgoodcolour. Here are some of our favourites

"We scraped woodchip off all four walls and the ceiling and had the room fully replastered. We then painted it with Dulux Soft Stone and white Satinwood on the woodwork. A carpet in warm neutral tones completed the new look"

@theglasgownest



Soft
Stone™



EXPERT
KNOW-HOW
Marianne
Shillingford

"Neutral shades can appear warm or cool depending on the colours paired with them. With a colour like **Soft Stone** in a bedroom, it'll feel cosier combined with natural textures and yellow tones. In a living area, it'll feel energising mixed with a crisp blue, such as **Open Sky**."



“When I saw Brave Ground I knew it was the perfect shade for our spare room. It’s so versatile – gorgeous against the black accents of the bed frame and our prints, while also picking out the greens of the houseplants and cushions dotted around the room.”

@hguppy

“So many people think that my terrazzo wall is either wallpaper, stencils or decals... nope! I hand-painted it... all you need is a few different coloured tester pots or tins of unused paint and you’ve got yourself a pretty unique feature wall... I decided to wrap the terrazzo design around the wall too”

@all_things_interior



Dulux EasyCare
Washable & Tough
 20 times tougher than standard Dulux Matt

Perfect panels

Why not dial up your room's character by adding a wall of decorative panelling – ideal for a reading nook.



**Dulux Easycare
Washable & Tough;
Dulux Quick Dry
Satinwood**



Mineral Mist™

DID YOU ENJOY THE ISSUE? FIND MORE INSPIRATION ONLINE AT DULUX.CO.UK

Our One Coat Guarantee entitles you to a refund if one coat is not satisfactory. The additional Dulux Promise assures the perfect colour with a uniform finish and the coverage stated for your paint, or we'll replace it. Both the Promise and the Guarantee only apply if the instructions are strictly followed. Terms and Conditions apply [dulux.co.uk/promise and dulux.co.uk/ocguarantee] We have reproduced this colour card as accurately as printing will allow. Please ensure that you use a colour tester on the actual surface to be painted before decorating; the substrate and texture of the surface can change the appearance of the final colour, as can soft furnishings and the shape, size and lighting of the room. Please note: colour testers indicate the colour of the product only and are not representative of the quality or sheen of the final product purchased. Safety, Health and Environment: before using a product ensure you read all instructions on the back of the product, including Health and Safety warnings. AkzoNobel, Dulux, the Dulux dog, the Flourish logo, the Dulux Quality Promise, Let's Colour, Easycare, Light+Space, Simply Refresh, Weathershield, Dulux Select Decorators, Polycell, Magic White and all colour names marked TM are trademarks of the AkzoNobel group © AkzoNobel 2021.



DB_02886_031220 N

