



COLOUR LOOKBOOK

7 interior design trends
to embrace in 2024



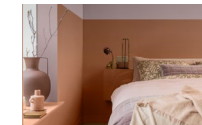
HOME DECOR TRENDS 2024

Get a feel for next year's most sought-after shades

If you like to keep your ear to the ground when it comes to interior design trends, you'll be glad you downloaded our Colour Lookbook. We've gathered the shades and styles that our colour specialists predict to be the most celebrated in 2024.

While there are lots of different trends for you to embrace over the coming year, they all share the same intention... to fill your spaces with positivity and make you feel happy.

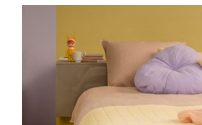
Try the trends out for yourself. Order a roller tester at [dulux.co.uk](https://www.dulux.co.uk)



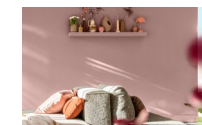
3
WARM
NEUTRALS



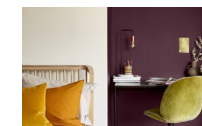
4
A SIMPLE
SPACE



5
JOYFUL
INTERIORS



6
PINK: THE NEW
NEUTRAL



7
HOME
OFFICES



8
SUSTAINABLE
STYLE



9
COLOUR
ZONING



10
TRY THE
TRENDS

WARM NEUTRALS

Create a place where you belong

In 2023, we put nature at the heart of our colour story. For 2024, we're leaning into colours that bring a sense of belonging to our spaces. Earth tones lend themselves well to this idea. They provide a palette of warm neutrals that are ideal for spaces where you want to feel snug and settled, especially when life feels busy and complicated.

Brown, beige, and cream are wonderfully warm neutrals. But why stop there? Consider statement neutrals like [Auburn Embers](#) and [Copper Glow](#). When paired with [Sweet Embrace™](#), a pink toned neutral and our new Colour of the Year, these earthy tones allow you to carve out your own special place.



Sweet Embrace™

Copper Glow

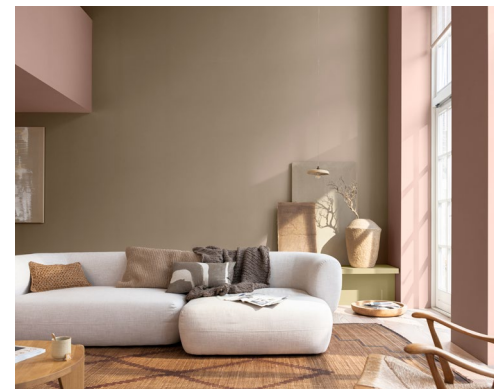
Dulux Colour of the Year 2024: Sweet Embrace™

A delicate, blossom pink that brings a feeling of positivity to our lives.



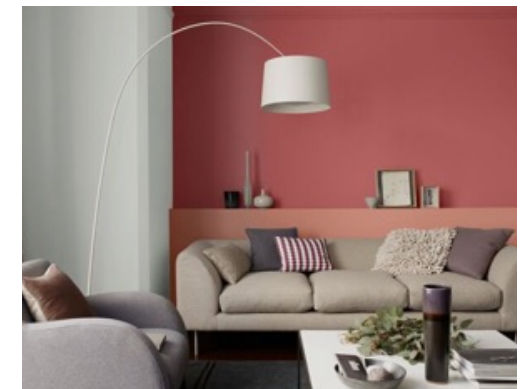
Sweet Embrace™

Fireside Embers



Woven Hemp

Brave Ground™



Copper Blush

Auburn Embers

A SIMPLE SPACE

Finding calm amongst the chaos

Keep it simple – a rule to live by, and now, a decorating trend to follow. With so much noise from the outside world, it's more important than ever to turn the volume down in your home and create a calming sanctuary that clears your mind.

Steer away from deep hues and go for refreshing blues and greens that feel calm. [Teal Voyage](#) is a lovely choice, and you can get it in [Dulux Simply Refresh Multi-surface](#), a 2-in-1 formulation that paints and primes at the same time. Simple.

Go back to basics with natural materials such as wood, cork, and stone. Relaxed and yet still refined, they can simplify your space and help you disconnect from it all.



Moon Cloud

Tranquil Dawn™



Teal Voyage

Coastal Grey



White Mist

Tranquil Dawn™



Sweet Embrace™

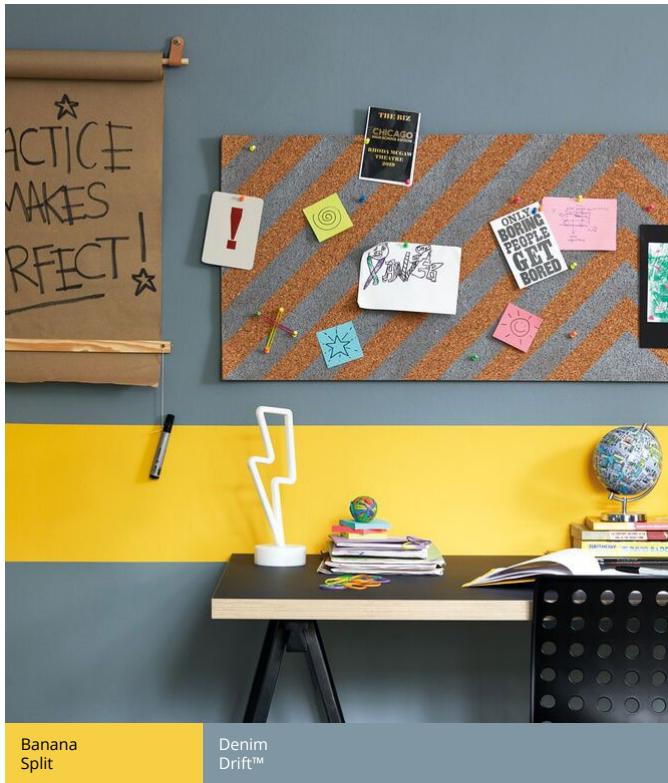
Tranquil Dawn™

JOYFUL INTERIORS

C'mon get happy!

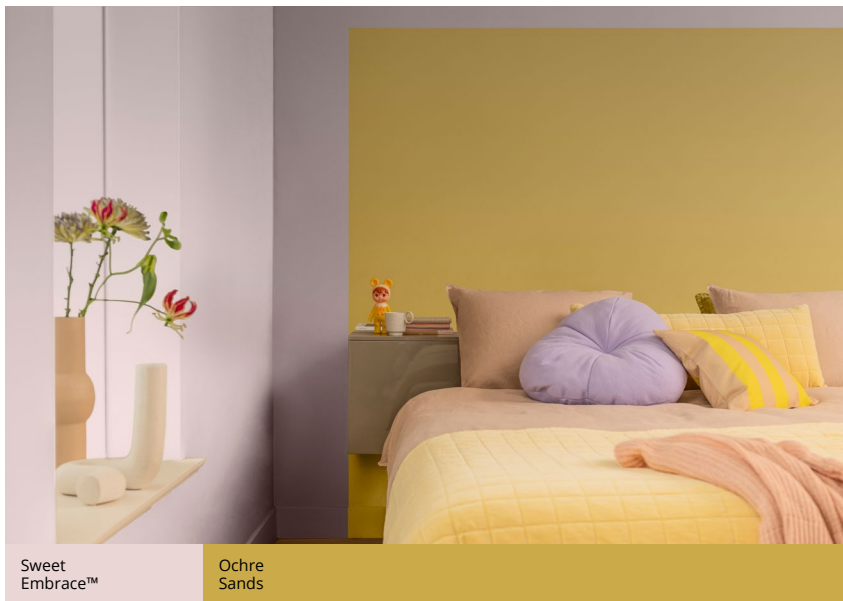
Banana Split, Dusted Fondant, Denim Drift™. Who wouldn't want to play around with these fun-loving shades? As we hinted back in 2022, joyful interiors are a vibe that can't be ignored (not that you could if you wanted to!). With vivid hues, bold patterns, and loud shapes, it's all about bringing the joy.

Naturally uplifting, sunny bright yellows take centre stage. But for a more modern colour combo, team them with cheery violets that sit opposite on the colour wheel. It's up to you how and where you use these shades, so long as they make you happy!



Banana Split

Denim Drift™



Sweet Embrace™

Ochre Sands



Golden Sands™

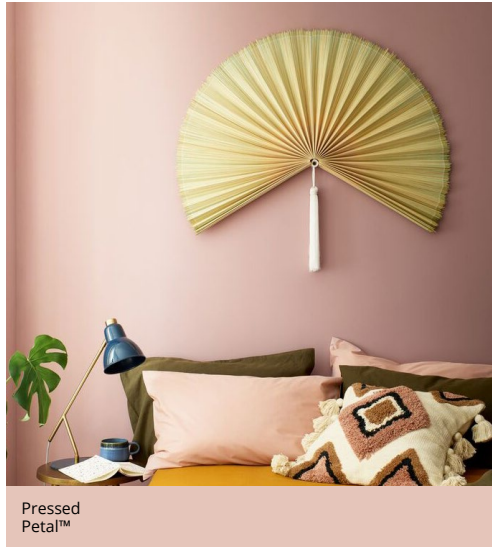
Timeless



Dusted Fondant

Banana Split

Chic Shadow



Pressed Petal™

PINK: THE NEW NEUTRAL

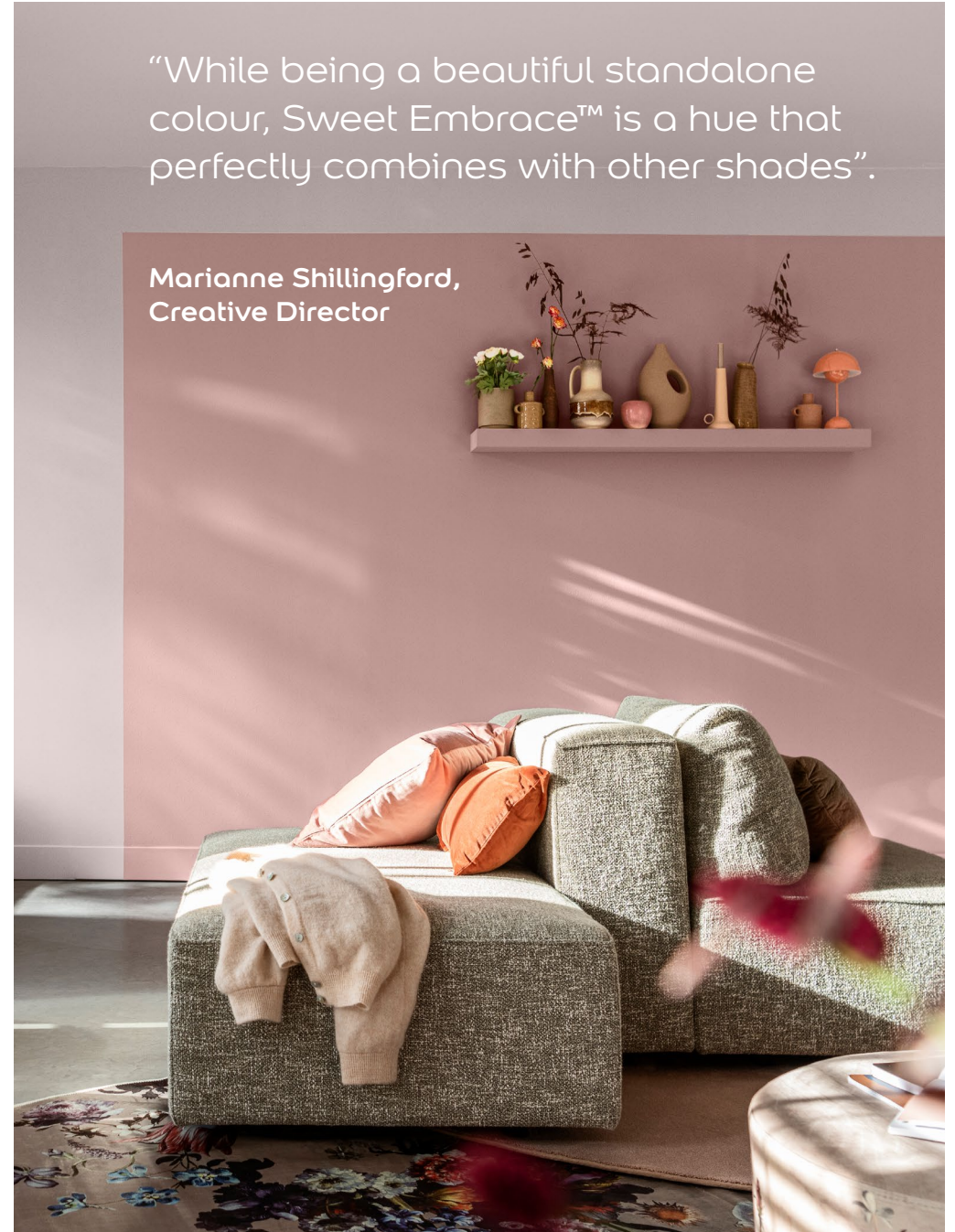
A colour takeover

Pink is everywhere. In our wardrobes, in our homes – and even on our screens thanks to the cultural phenomenon that was the Barbie movie. Yet while we'll see splashes of hot pink here and there, it's blush and earthy pinks that will become staples in our surroundings. Versatile and easy to live with, think of them as the new neutrals.

Our Colour of the Year for 2024, *Sweet Embrace™*, is a kind, gentle tone that's leading the way for other subtle pinks. Try it in your home and see how our hero shade effortlessly creates a sense of calm and comfort in any space.



Blush Pink

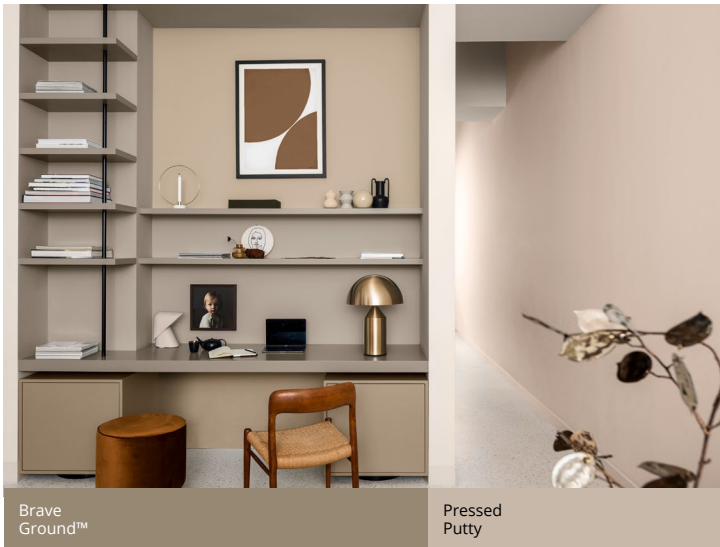


“While being a beautiful standalone colour, Sweet Embrace™ is a hue that perfectly combines with other shades”.

Marianne Shillingford,
Creative Director

Sweet Embrace™

Pink Sandstone



Brave Ground™

Pressed Putty

HOME OFFICES

Going from part time to full time

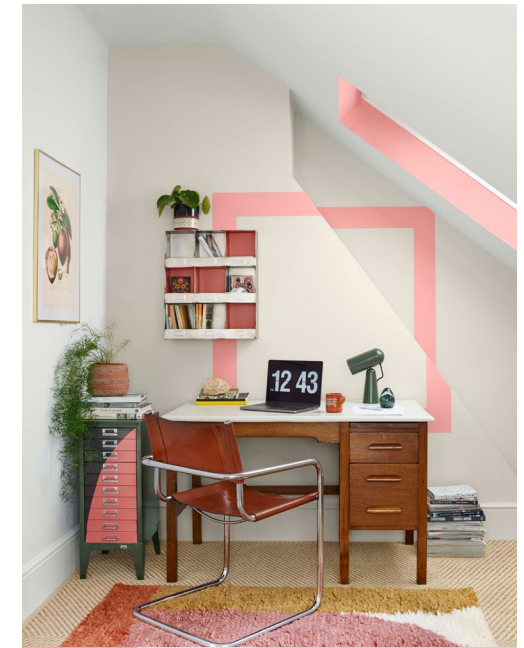
Most trends come and go, but some stick around for good. Home offices being one of them. For 2024, the emphasis is on making workspaces a permanent fixture in the home. Having a dedicated place to work, that blends seamlessly with your existing rooms, can help to keep your home in order and boost your productivity.

While ergonomic furniture and smart storage are essential, it's the colours on your walls that will help you get the job done. Luckily, the [Dulux colour range](#) gives you plenty of choice, plus we have lots of [home office design ideas](#) to help you separate work from play.



Natural Hessian

Decadent Damson



Boho Blush

Rock Salt

Natural Calico



Wild Wonder™

Old Time Olive

SUSTAINABLE STYLE

Make a positive impact

If you want to make your home more eco-friendly, you're not alone. Green living is on the rise, and we can't see it slowing down anytime soon.

Upcycling is one of the easiest ways to tap into the trend. Instead of buying new, bring pre-loved furniture back to life with colour. Use Dulux Simply Refresh Multi-surface, a 2-in-1 water-based formulation that paints and primes at the same time.

You can make kinder choices when styling your home, too. Pick reclaimed materials and energy-efficient lighting. Or create harmony with the outside world by following the biophilic trend. Earthy tones and natural elements show an appreciation for nature.



Proud Peacock™



Melton Sorbet Nordic Sky Lemon Pie Teal Tension Copper Blush



Denim Drift™ Black



Timeless Black Gentle Fawn



Emerald Glade



Pressed Petal™



Coral Charm

Decadent Damson

Fresh Foliage



White Mist

Village Maze

COLOUR ZONING

For hard-working homes

As the name suggests, colour zoning is where you carve out certain areas of a room with blocks of colour. Design experts swear by it, and you're going to be seeing more of it over the coming year.

Colour zoning is particularly helpful in multi-layered or multi-generational homes that need to work harder. When decorating a do-it-all space, like a bedroom doubling up as a study or an open plan kitchen, colour zoning brings focus to where you need it most. Impactful shades like [Emerald Glade](#) or [Pressed Petal™](#) really leap out against pale or white walls.

3 WAYS TO TRY THE TRENDS

Get your paint project rolling...

We know what you're thinking. How can you bring these trends to life in your own home? Easy. Just use our expert colour tools and accurate paint testers.



1 Download the **Dulux Visualizer App** to your iOS or Android device and see how different shades look in your home without adding a drop of paint to your walls.



2 Quick, easy, and mess-free, apply our **roller testers** to your walls and get an accurate look at the finished result.



3 Easy to move from room to room, use our **Peel & Stick samples** to test shades on different walls and in different lights.



Dulux Promise

We promise our paint will give you the perfect colour with a uniform finish and the coverage stated, or we'll replace it. Visit dulux.co.uk/promise



SHARE YOUR IDEAS

We want to see your makeovers!

Now it's your turn... if our latest Colour Lookbook has inspired you to pick up your paint brush, we'd love to see how you're transforming your spaces with the latest trends.

Follow us on Instagram and tag your posts with [@duluxuk](#) for the chance to be featured. Or discover more inspiration on [dulux.co.uk](#)

